

EGTC FOR THE CENTRAL EUROPEAN TRANSPORT CORRIDOR

Krzysztof Żarna

Director of CETC-EGTC Ltd.

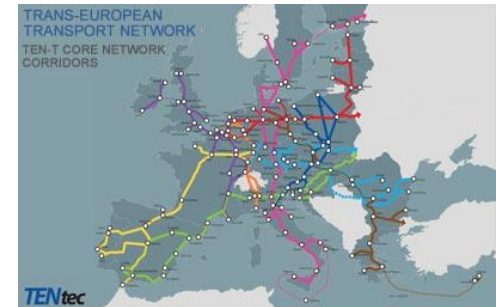
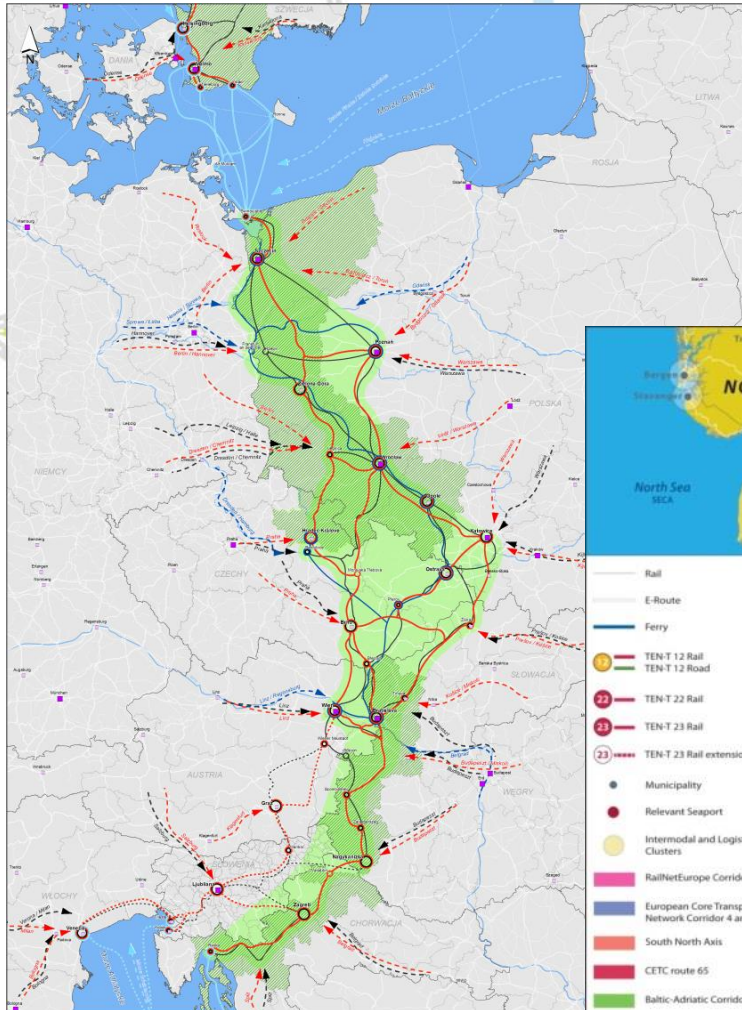
Director of Territorial Cooperation
Department

Marshal's Office of the West
Pomerania Region

5th Meeting of the EGTC Approval Authorities
22/09/2016, Budapest

our shared priorities

- co-modality
- environment
- innovation
- economic growth
- regional cohesion



e-mail: office@cetc.pl

some activities of the EGTC

1. **Raising awareness of the EU institutions, central and local government and local authorities on the importance of CETC-EGTC as an instrument for territorial cohesion, in particular transport priority.**
2. Participation of the CETC – EGTC in the preparation of opinions on the development of core and comprehensive network. **Participation in meetings of the Regional Working Group and the Baltic - Adriatic Corridor Forum.**
3. Encouraging regions and third bodies to **engage** effectively in the implementation of the Grouping's tasks.
4. Extending the **cooperation platform** – data collection tools and the opinion exchange forum and the ongoing valuation of results of actions taken up by the partners of Central European regions, associated institutions and other stakeholders, including neighbouring regions.

some activities of the EGTC

5. Continuation of activities related to the implementation of projects, including the following ones: **Greener Modality, TENTacle, NSB Core and TalkNET.**
6. Continuation of **cooperation with the EGTC Platform**, which operates under the coordination of the Committee of the Regions.
7. Developing the concept of the broad **development activities** concentrated in the regions forming a corridor on the basis of cluster activity, innovation networks, think tanks, etc.
8. **Development of the Strategic Centre**, which was launched in December 2015 in the Zala County (Hungary). The Strategic Centre began working on a coordinated investment sequence, which is to contribute to achieving economic and social cohesion of the macroregion located between the Baltic and the Adriatic.
9. **Cooperation** with the Association of Polish Regions of Baltic Adriatic Transport Corridor

seeking new opportunities

**we are not afraid of taking on
various and diverse activities
to catch up with the new challenges
so that we are able to create best possible
conditions
to boost and promote cooperation
for developing the innovative solutions**

2 most important factors

in optimizing transport planning and development across the borders:

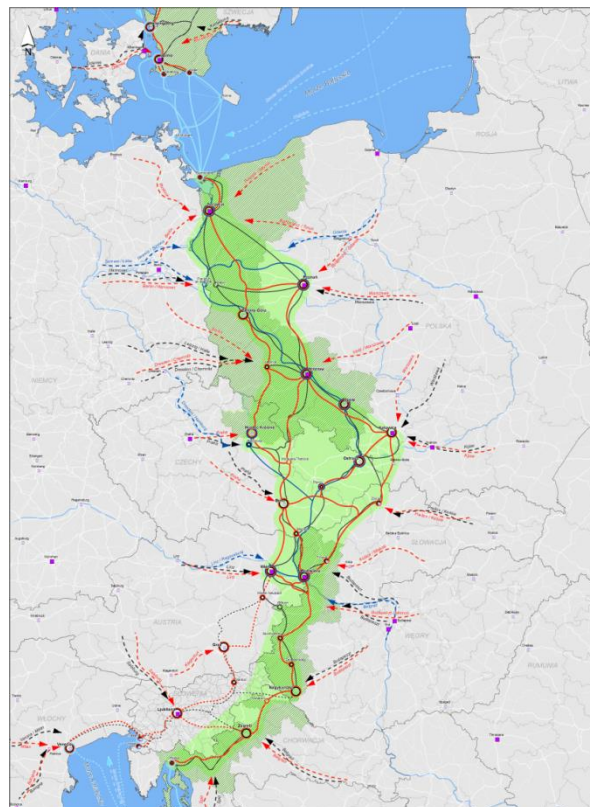
- **the shared priorities by the cooperating stakeholders and**
- **the quality of dialogue among different levels actors**

EGTC and 15 ETC programmes

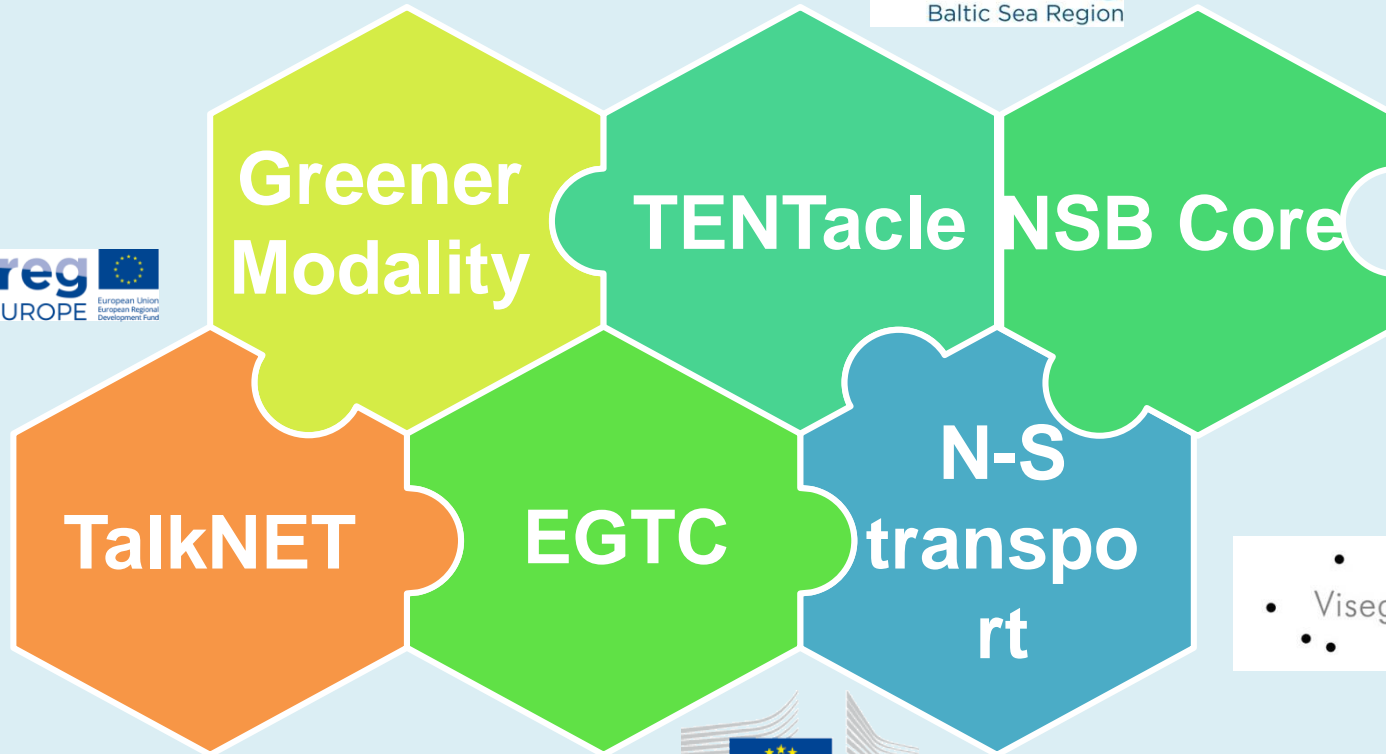
- CBC South Baltic
- CBC DE/Brandenburg-PL
- CBC DE /Mecklenburg Western Pomerania/Brandenburg - PL
- CBC CZ-PL
- CBC HU-HR
- CBC HU-SK
- CBC PL-SK
- CBC SK-CZ
- CBC SI-AT
- CBC SI-HU
- Transn. Baltic Sea Region
- Transn. Central Europe
- Transn. Danube Region
- Transn. MED



CENTRAL EUROPEAN TRANSPORT CORRIDOR
EUROPEAN GROUPING OF TERRITORIAL COOPERATION



some activities of the EGTC





CETC has a unique common research area.
To use it effectively we need to act for ensuring full mobility of researchers, attract new talents, build a common strategic framework to pool resources and facilitate joint programming as well as simplify co-operation.

In order to face global development challenges and to catch up, both states and regions, as public players, need to engage actively in a strategic partnership with businesses, scientific institutions and the social sector.

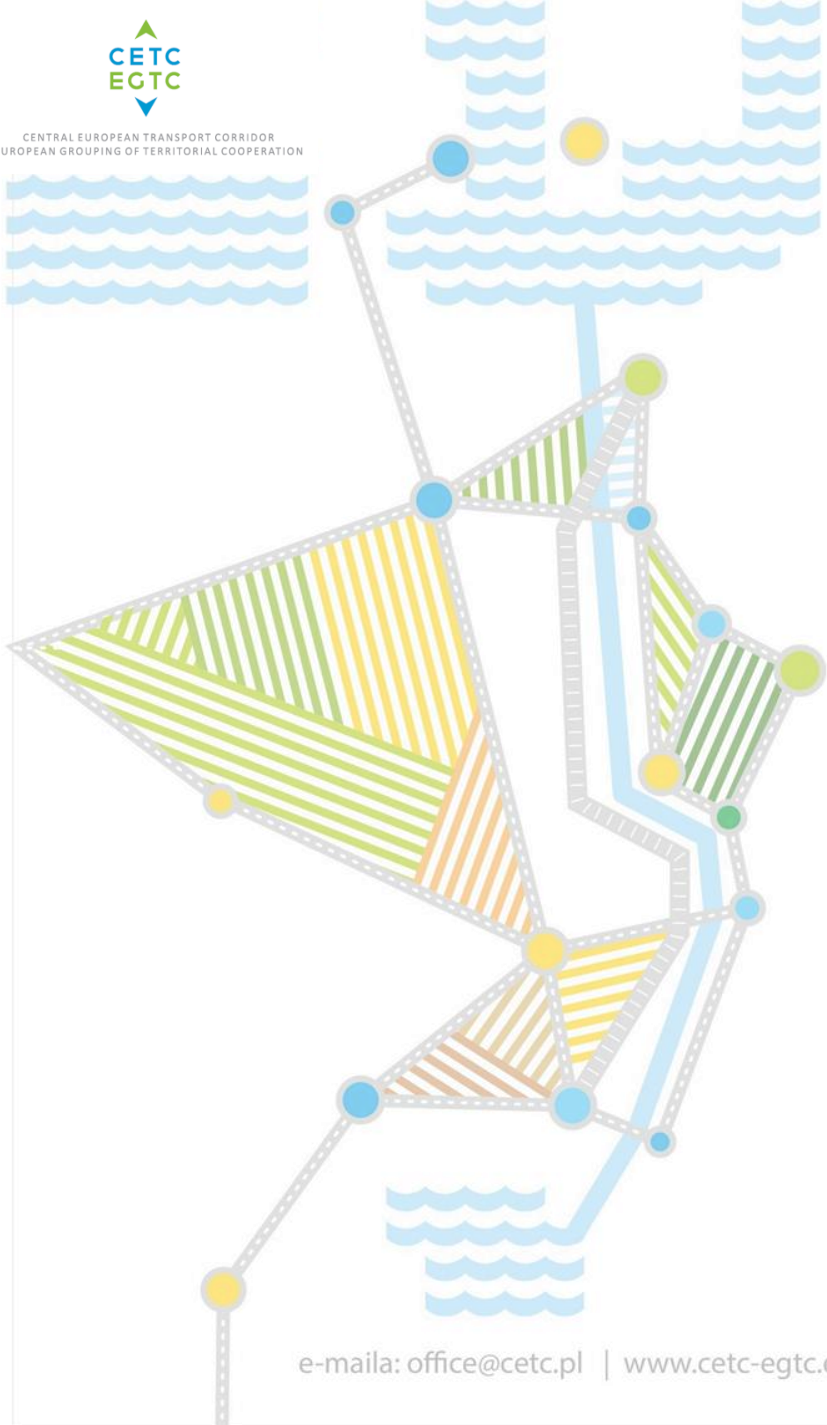


West Pomerania

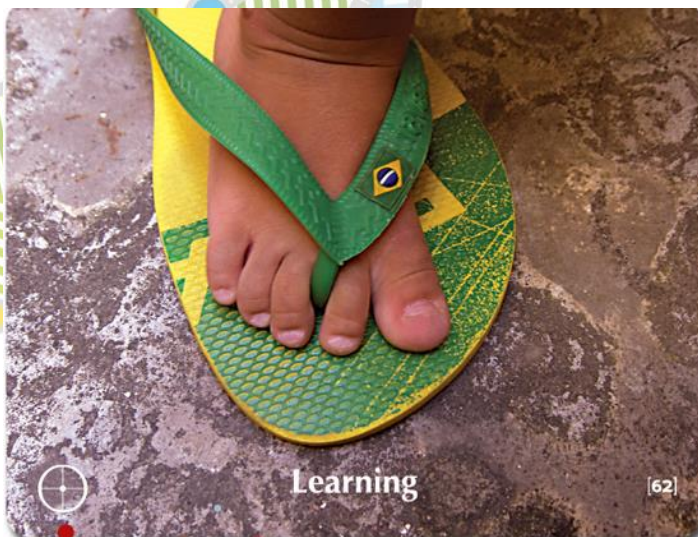


Starting from **N↔S** transport axis towards innovative and dynamic Central European regions

• Visegrad Fund 
www.visegradfund.org



To promote innovation development, Europe, the Member States, and the regions must act together in partnership frameworks.



photos: www.points-of-you.com

Any attempts to establish cooperation in a specific area should entail determining the precise scope of activities planned within the value chains identified, together with interregional value chains. This will allow the identifying of those areas in which cooperation might actually provide added value.

KEY COOPERATION AREAS

- Biotechnology
- Public health
- Metal, machinery and automotive industries
- Electronics, automatics and mechatronics

SUPPORTING AREAS

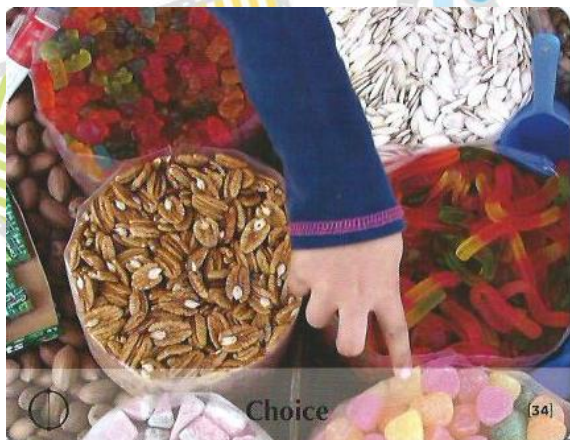
- Advanced materials and ICT
- Renewable energy sources and sustainable environment

Specialisations in the Central European Transport Corridor

LOCAL COOPERATION AREAS

- The food industry, agriculture and fisheries
- The wood and furniture industry
- The chemical industry
- The tourism, culture and creative industries

The search for the actual correlations and prospects for economic and scientific cooperation should constitute the object of cooperation within the areas identified.



photos: www.points-of-you.com

On the one hand, economic cooperation should lead to identifying supra-regional value chains, together with related cooperation opportunities for enterprises operating in partner countries.

On the other hand, scientific cooperation should focus on searching for solutions and conducting research that can translate into economic practices, increasing the added value in the cooperation areas identified.

Greener Modality

Greener intermodal freight transport for a more integrated and competitive CEE

– project under the program Interreg CENTRAL EUROPE 2014 - 2020

- **Project aims** to foster a modal shift towards rail from road in freight transport in order to reduce the environmental impact of cargo stream in and **across CEE** and to enhance economic integration of CEE through better linking its regions to each other, to main international freight corridors and to Baltic and Adriatic ports.
- **Project duration:** 01.09.2017- 31.08.2020
- **Budget:** 1.806.960,00 €
- **Lead partner organisation:** Central European Transport Corridor Limited Liability European Grouping of Territorial Co-operation

Project specific objectives:

- Better coordination of transport policies in CEE.
- More and better information to analyses and forecasts of economic and environmental impacts of transport in CEE.
- Adapt policies to utilize economic and environmental gains of technology development.



some activities of the EGTC



TENTacle



- Improve stakeholder capacity to reap benefits of the core network corridors implementation for the prosperity, sustainable growth and territorial cohesion in the Baltic Sea Region
- **tentacle.eu**



About TENTacle

- Project lifetime: 2016-2019
- ERDF contribution: 2,755,463.45 €
- Norwegian contribution: 93,730 €
- 23 partners from 9 countries
- 65+ associated organisations
- 7 regional action showcases
- Macroregional impact

Showcase Westpomerania & Skåne

“Cooperation for smart and green transport”

Strengthen the capacity in the regions to achieve an effective stakeholder interaction in the implementation of the transport network with use of the **EGTC mechanism.**

some activities of the EGTC

NSB Core



- NSB CoRe project aims to improve the sustainable accessibility of the Eastern Baltic Sea Region to freight and passenger transport. The Helsinki-Uusimaa Regional Council is the lead partner of the project.

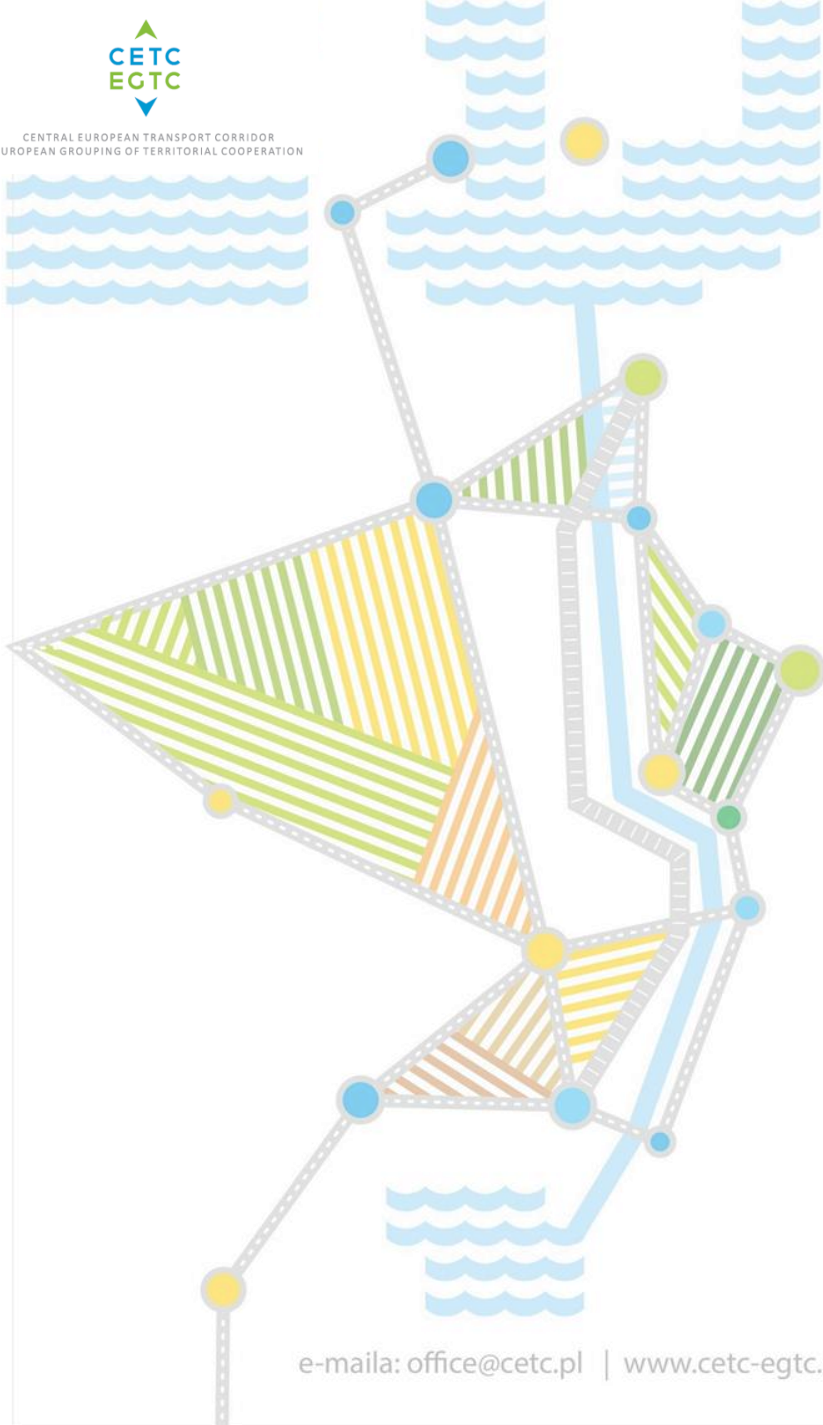
TalkNET



- TalkNET – Transport and Logistic Stakeholders Network - aims to develop actions to support the activation of the new intermodal transport systems and improving the existing ones, linking the central Europe regions.



CENTRAL EUROPEAN TRANSPORT CORRIDOR
EUROPEAN GROUPING OF TERRITORIAL COOPERATION



e-mail: office@cetc.pl | www.cetc-egtc.eu

Thank you for your attention!

Krzysztof Żarna
CETC-EGTC Ltd. Director
Piłsudskiego 40-42
70-570 Szczecin/ Poland
Phone. +48 91 44 67 138
Phone. +48 91 512 279 737
Fax. +48 91 44 67 171
E - mail: office@cetc-egtc.eu,
office@cetc.pl